

The Ash Grove

Traditional Welsh

F C7 F Gm C7

1. Down yon - der green val - ley, where stream-lets me - and - er, When
 (2. Still) glows the bright sun - shine o'er va - lley and moun - tain, Still

F Bb F C7 F

twi - light is ___ fad - ing I pen - sive - ly rove Or
 warb - les ___ the ___ black - bird its note from the tree; Still

C7 F Gm C7

at the bright noon - tide in sol - i - tude ___ wand - er, A -
 tremb - les the ___ moon - beam on stream - let ___ and ___ fount - ain, But

F Bb F C7 F

mid the ___ dark ___ shades of the lone - ly ash grove; 'Twas ___
 what are ___ the ___ beau - ties of na - ture to me? With ___

The Ash Grove

C7



18

there, while the black - bird was cheer - ful - ly sing - ing, I
sor - row, deep sor - row, my bos - om is lad - en, All

F



C



G7



C



C7



22

first met that dear one, the joy of my heart! A -
day I go mourn - ing in search of my love; Ye

F



C7



F



Gm



C7



26

round us for glad - ness the blue - bells were ring - ing, Ah!
ech - oes, oh, tell me, where is the sweet maid - en? "She

F



Bb



F



C7



F



30

then lit - tle thought I how soon we should part. 2. Still
sleeps, 'neath the green turf down by the ash grove." _____

The Ash Grove

Traditional Welsh

1. Down yon - der green val - ley, where stream - lets me - and - er, When
(2. Still) glows the bright sun - shine o'er va - lley and moun - tain, Still

6
twi - light is fad - ing I pen - sive - ly rove Or
warb - les the black - bird its note from the tree; Still

10
at the bright noon - tide in sol - i - tude wand - er, A -
tremb - les the moon - beam on stream - let and fount - ain, But

14
mid the dark shades of the lone - ly ash grove; 'Twas
what are the beau - ties of na - ture to me? With

The Ash Grove

D7



18



there, while the black - bird was cheer - ful - ly sing - ing, I
 sor - row, deep sor - row, my bos - om is lad - en, All

G



D



A7



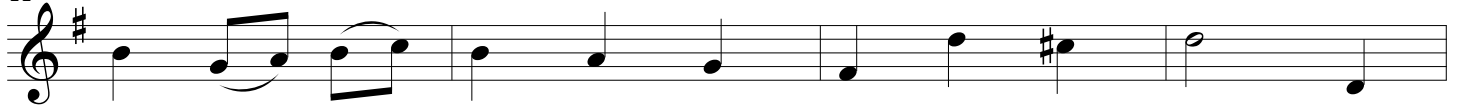
D



D7



22



first met that dear one, the joy of my heart! A -
 day I go mourn - ing in search of my love; Ye

G



D7



G



A m



D7



26



round us for glad - ness the blue - bells were ring - ing, Ah!
 ech - oes, oh, tell me, where is the sweet maid - en? "She

G



C



G



D7



G



30

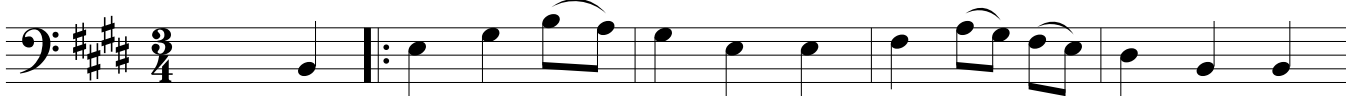



then lit - tle thought I how soon we should part. 2. Still
 sleeps, 'neath the green turf down by the ash grove." _____

The Ash Grove


Traditional Welsh

E B7 E F#m B7




1.Down yon - der green val - ley, where stream-lets me - and - er, When
(2.Still) glows the bright sun - shine o'er va - lley and moun - tain, Still

E A E B7 E



6



twi - light is ___ fad - ing I pen - sive - ly rove Or
warb - les ___ the ___ black - bird its note from the tree; Still

B7 E F#m B7




10

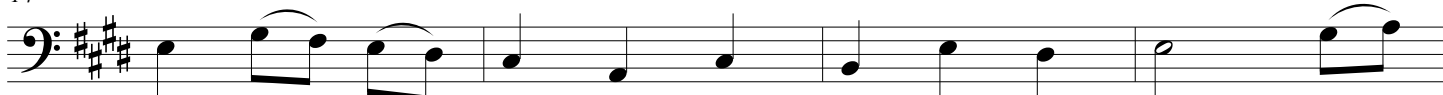


at the bright noon - tide in sol - i - tude wand - er, A -
tremb - les the ___ moon - beam on stream - let ___ and ___ fount - ain, But

E A E B7 E



14



mid the ___ dark shades of the lone - ly ash grove; 'Twas
what are ___ the ___ beau - ties of na - ture to me? With ___

The Ash Grove

B7



18



there, while the black - bird was cheer - ful - ly sing - ing, I
 sor - row, deep sor - row, my bos - om is lad - en, All

E



B



F#7



B



B7



22



first met that dear one, the joy of my heart! A -
 day I go mourn - ing in search of my love; Ye

E



B7



E



F#m



B7



26



round us for glad - ness the blue - bells were ring - ing, Ah!
 ech - oes, oh, tell me, where is the sweet maid - en? "She

E



A



E



B7



E



30



then lit - tle thought I how soon we should part. 2. Still
 sleeps, 'neath the green turf down by the ash grove." _____

The Ash Grove

Traditional Welsh

C G7 C Dm G7

1. Down yon - der green val - ley, where stream-lets me - and - er, When
 (2. Still) glows the bright sun - shine o'er va - lley and moun - tain, Still

6 C F C G7 C

twi - light is fad - ing I pen - sive - ly rove Or
 warb - les the black - bird its note from the tree; Still

10 G7 C Dm G7

at the bright noon - tide in sol - i - tude wand - er, A -
 tremb - les the moon - beam on stream - let and fount - ain, But

14 C F C G7 C

mid the dark shades of the lone - ly ash grove; 'Twas
 what are the beau - ties of na - ture to me? With

The Ash Grove

G7



18



there, while the black - bird was cheer - ful - ly sing - ing, I
 sor - row, deep sor - row, my bos - om is lad - en, All

C



22



first met that dear one, the joy of my heart! A -
 day I go mourn - ing in search of my love; Ye

C



G7



C



26



round us for glad - ness the blue - bells were ring - ing, Ah!
 ech - oes, oh, tell me, where is the sweet maid - en? "She

Dm



G7



C



F



C



G7



C



30



then lit - tle thought I how soon we should part. 2. Still
 sleeps, 'neath the green turf down by the ash grove." _____

The Ash Grove

Traditional Welsh

A E7 A Bm E7

1.Down yon - der green val - ley, where stream-lets me - and - er, When
 (2.Still) glows the bright sun - shine o'er va - lley and moun - tain, Still

A D A E7 A

6

twi - light is ___ fad - ing I pen - sive - ly rove Or
 warb - les ___ the ___ black - bird its note from the tree; Still

E7 A Bm E7

10

at the bright noon - tide in sol - i - tude ___ wand - er, A -
 tremb - les the ___ moon - beam on stream - let ___ and ___ fount - ain, But

A D A E7 A

14

mid the ___ dark ___ shades of the lone - ly ash grove; 'Twas
 what are ___ the ___ beau - ties of na - ture to me? With ___

The Ash Grove

E7



18



there, while the black - bird was cheer - ful - ly sing - ing, I
sor - row, deep sor - row, my bos - om is lad - en, All

A



E



B7



E



E7



22



first met that dear one, the joy of my heart! A -
day I go mourn - ing in search of my love; Ye

A



E7



A



Bm



E7



26

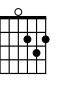


round us for glad - ness the blue - bells were ring - ing, Ah!
ech - oes, oh, tell me, where is the sweet maid - en? "She

A



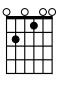
D



A



E7



A



30



then lit - tle thought I how soon we should part. 2. Still
sleeps, 'neath the green turf down by the ash grove." _____

The Ash Grove

Traditional Welsh

Ukulele

F
C7
F
Gm
C7

F
Bb
F
C7
F

C7
F
Gm
C7

F
Bb
F
C7
F

1. Down yon - der green val - ley, where stream - lets me - and - er, When
 (2. Still) glows the bright sun - shine o'er va - lley and moun - tain, Still
 twi - light is ___ fad - ing I pen - sive - ly rove Or
 warb - les ___ the ___ black - bird its note from the tree; Still
 at the bright noon - tide in sol - i - tude ___ wand - er, A -
 tremb - les the ___ moon - beam on stream - let ___ and ___ fount - ain, But
 mid the ___ dark ___ shades of the lone - ly ash grove; 'Twas ___
 what are ___ the ___ beau - ties of na - ture to me? With ___

The Ash Grove

C7



18

there, while the black - bird was cheer - ful - ly sing - ing, I
sor - row, deep sor - row, my bos - om is lad - en, All

F



C



G7



C



C7



22

first met that dear one, the joy of my heart! A -
day I go mourn - ing in search of my love; Ye

F



C7



F



Gm



C7



26

round us for glad - ness the blue - bells were ring - ing, Ah!
ech - oes, oh, tell me, where is the sweet maid - en? "She

F



Bb



F



C7



F



30

then lit - tle thought I how soon we should part. 2. Still
sleeps, 'neath the green turf down by the ash grove." _____