

Polly Wolly Doodle

Traditional American

F

1.Oh, I went down south for to see my Sal, Sing
(2.Oh, my) Sal, she is a _____ maid - en fair, Sing
(3.Oh, a) grass - hopp - er sitt - in' on a rail - road track Sing

C

4
poll - y woll - y dood - le all the day. See my Sall - y she's a
With curl - y eyes and
A pick - in' his teeth with a

C7

7
spunk - y gal Sing
laugh - ing hair, Sing poll - y woll - y dood - le all the day. Fare thee
car - pet pick Sing

C

10
well, fare thee well fair thee well my fair - y day. For I'm goin' to Louis-i-an-a for to

C7

15
see my Sus - y - ann - a sing poll - y woll - y dood - e all the day. 2.Oh my
3.Oh a

Polly Wolly Doodle

Traditional American

1.Oh, I went down south for to see my Sal, Sing
 (2.Oh, my) Sal, she is a maid - en fair, Sing
 (3.Oh, a) grass - hopp - er sitt - in' on a rail - road track Sing

poll - y woll - y dood - le all the day. See my Sall - y she's a
 With curl - y eyes and with a
 A pick - in' his teeth with a

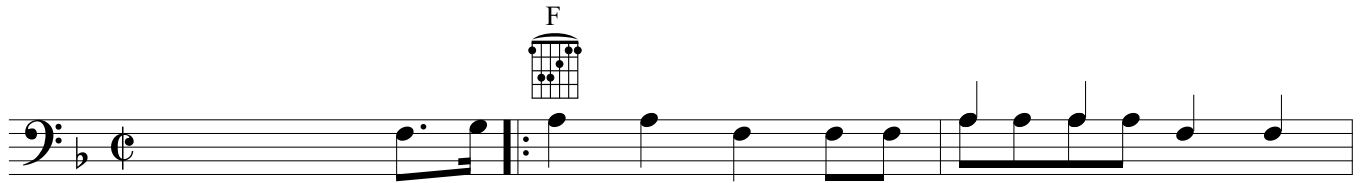
spunk - y gal Sing
 laugh - ing hair, Sing poll - y woll - y dood - le all the day. Fare thee
 car - pet pick Sing

well, fare thee well fair thee well my fair - y day. For I'm goin' to Louis-i - an - a for to

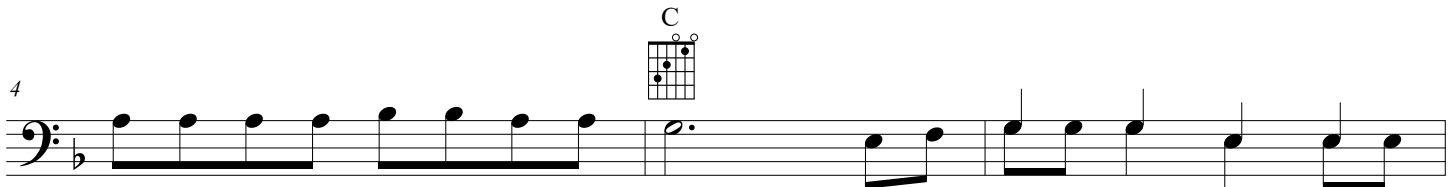
see my Sus - y - ann - a sing poll - y woll - y dood - e all the day. 2.Oh my
 3.Oh a

Polly Wolly Doodle

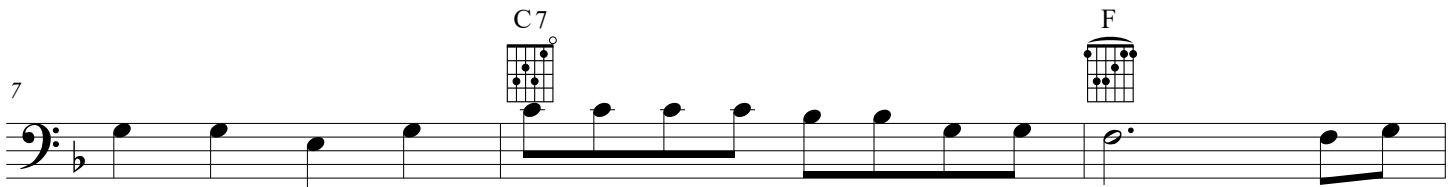
Traditional American



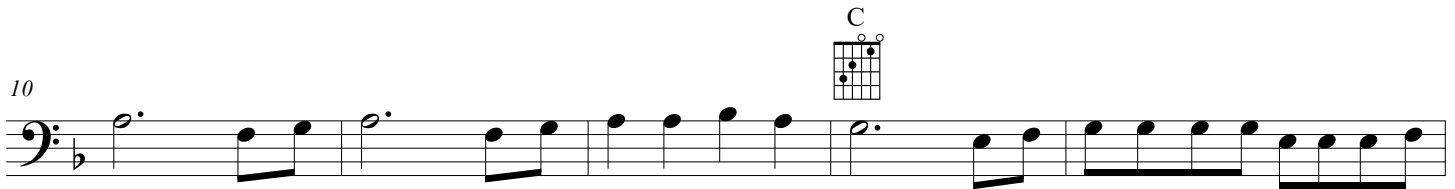
1.Oh, I went down south for to see my Sal, Sing
(2.Oh, my) Sal, she is a ___ maid - en fair, Sing
(3.Oh, a) grass - hopp - er sitt - in' on a rail-road track Sing



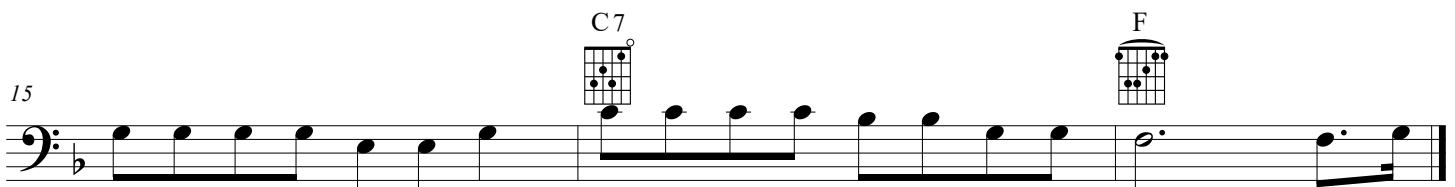
poll - y woll - y dood - le all the day. See my Sall - y she's a
With curl - y eyes and
A pick - in' his teeth with a



spunk - y gal Sing
laugh - ing hair, Sing poll - y woll - y dood - le all the day. Fare thee
car - pet pick Sing



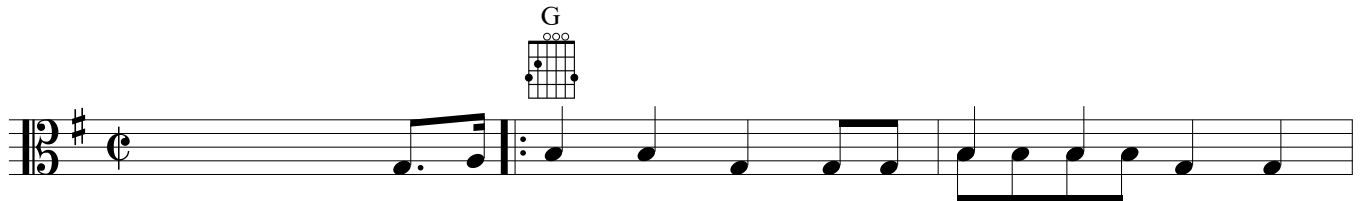
well, fare thee well fair thee well my fair - y day. For I'm goin' to Louis-i-an-a for to



see my Sus - y - ann - a sing poll - y woll - y dood - e all the day. 2.Oh my
3.Oh a

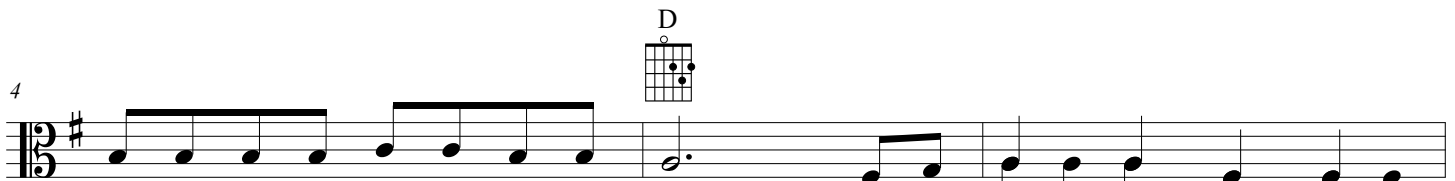
Polly Wolly Doodle

Traditional American



Musical notation for the first line of the song, starting with a G chord diagram above the staff.

1.Oh, I went down south for to see my Sal, Sing
(2.Oh, my) Sal, she is a ___ maid - en fair, Sing
(3.Oh, a) grass - hopp - er sitt - in' on a rail - road track Sing



Musical notation for the second line of the song, starting with a D chord diagram above the staff.

poll - y woll - y dood - le all the day. See my Sall - y she's a
With curl - y eyes and
A pick - in' his teeth with a



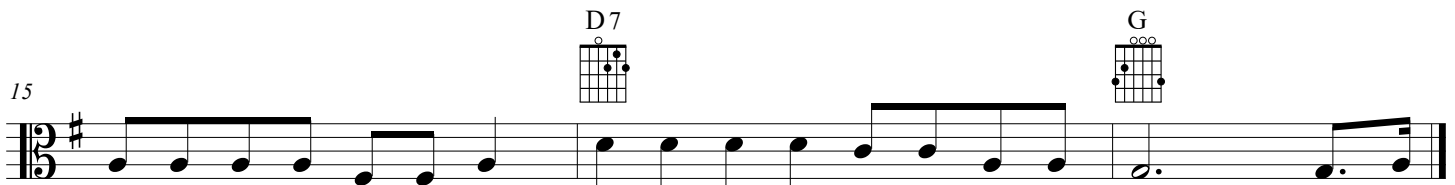
Musical notation for the third line of the song, with D7 and G chord diagrams above the staff.

spunk - y gal Sing
laugh - ing hair, Sing poll - y woll - y dood - le all the day. Fare thee
car - pet pick Sing



Musical notation for the fourth line of the song, starting with a D chord diagram above the staff.

well, fare thee well fair thee well my fair - y day. For I'm goin' to Louis-i - an - a for to



Musical notation for the fifth line of the song, with D7 and G chord diagrams above the staff.

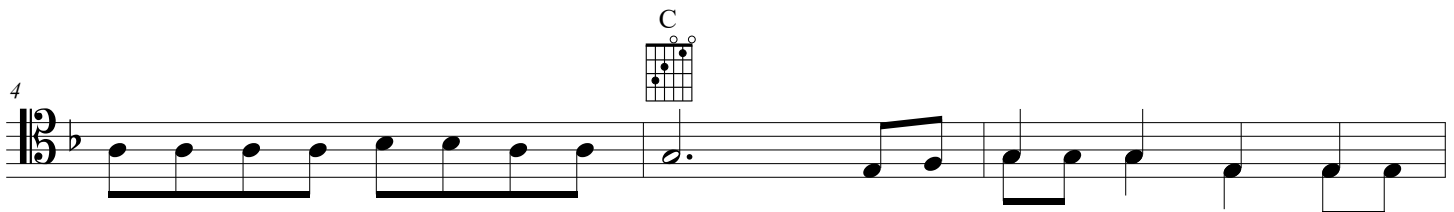
see my Sus - y - ann - a sing poll - y woll - y dood - e all the day. 2.Oh my
3.Oh a

Polly Wolly Doodle

Traditional American

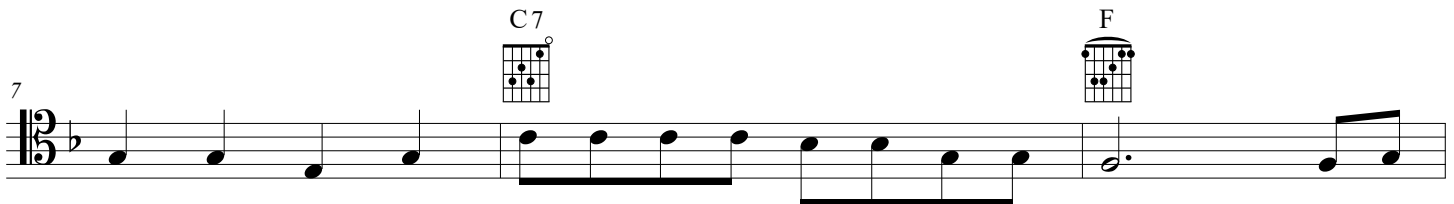


1.Oh, I went down south for to see my Sal, Sing
(2.Oh, my) Sal, she is a ___ maid - en fair, Sing
(3.Oh, a) grass - hopp - er sitt - in' on a rail - road track Sing



poll - y woll - y dood - le all the day.

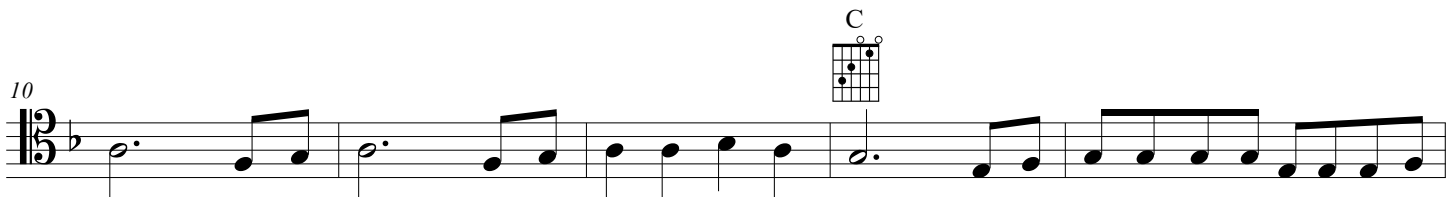
See my Sall - y she's a
With curl - y eyes and
A pick - in' his teeth with a



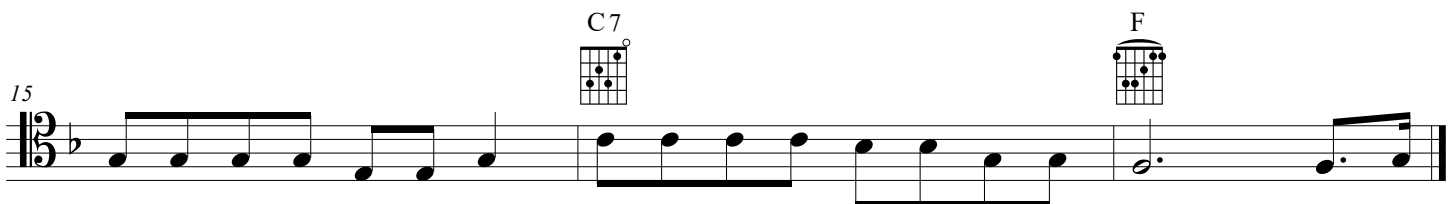
spunk - y gal Sing
laugh - ing hair, Sing
car - pet pick Sing

poll - y woll - y dood - le all the day.

Fare thee



well, fare thee well fair thee well my fair - y day. For I'm goin' to Louis-i-an-a for to



see my Sus - y - ann - a sing poll - y woll - y dood - e all the day.

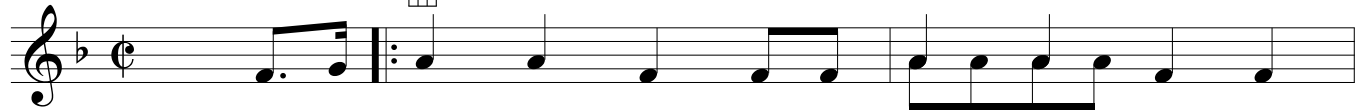
2.Oh my
3.Oh a

Polly Wolly Doodle

Traditional American

Ukulele

F



1.Oh, I went down south for to see my Sal, Sing
(2.Oh, my) Sal, she is a _____ maid - en fair, Sing
(3.Oh, a) grass - hopp - er sitt - in' on a rail - road track Sing

C

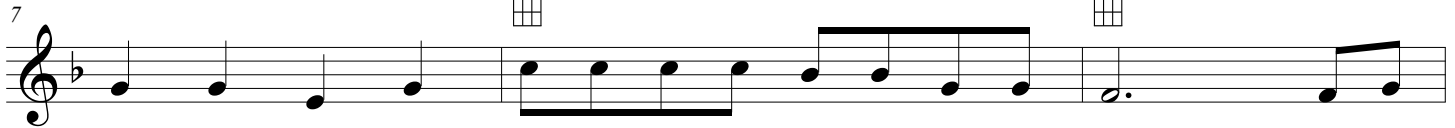


poll - y woll - y dood - le all the day. See my Sall - y she's a
With curl - y eyes and
A pick - in' his teeth with a

C7



F



spunk - y gal Sing
laugh - ing hair, Sing poll - y woll - y dood - le all the day. Fare thee
car - pet pick Sing

C

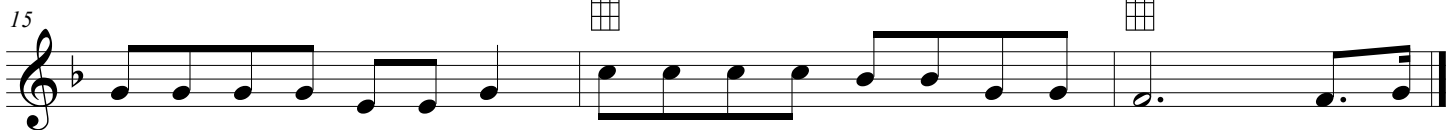


well, fare thee well fair thee well my fair - y day. For I'm goin' to Louis-i-an-a for to

C7



F



see my Sus - y - ann - a sing poll - y woll - y dood - e all the day. 2.Oh my
3.Oh a