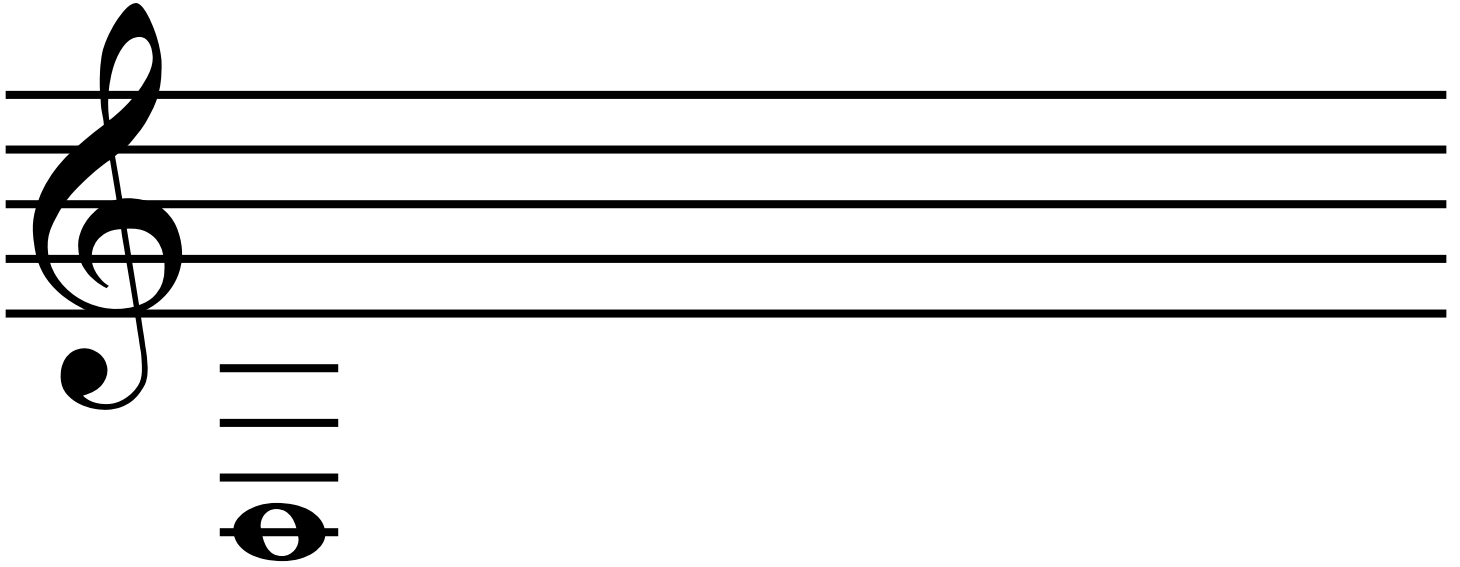
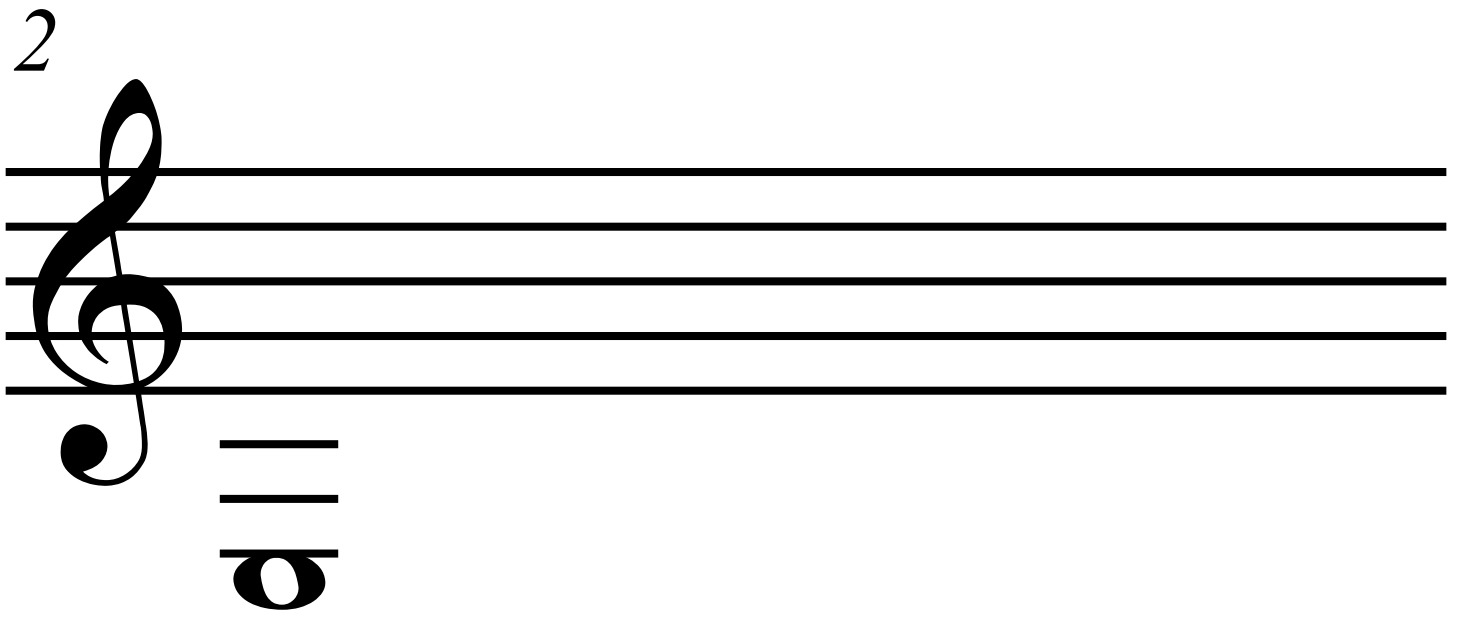


Score



A musical staff with a treble clef. Below the staff, there is a whole note chord consisting of four notes: G4, A4, B4, and C5. The notes are represented by a solid black circle for the stemhead, followed by a vertical line for the stem, and a horizontal bar for the notehead.

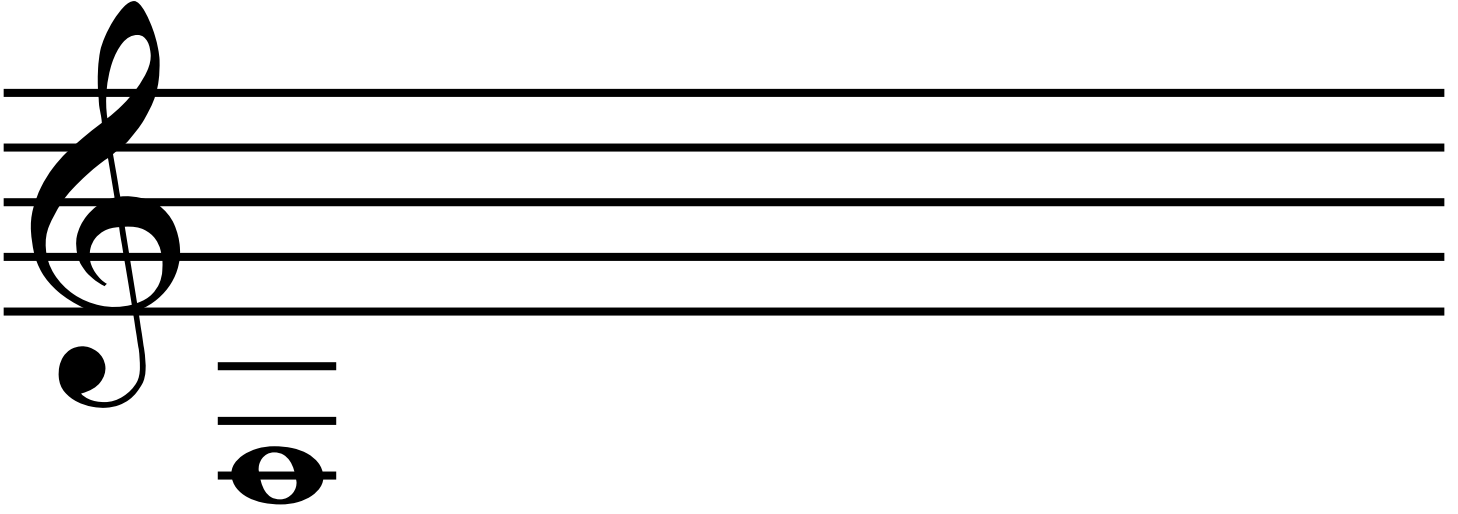
2



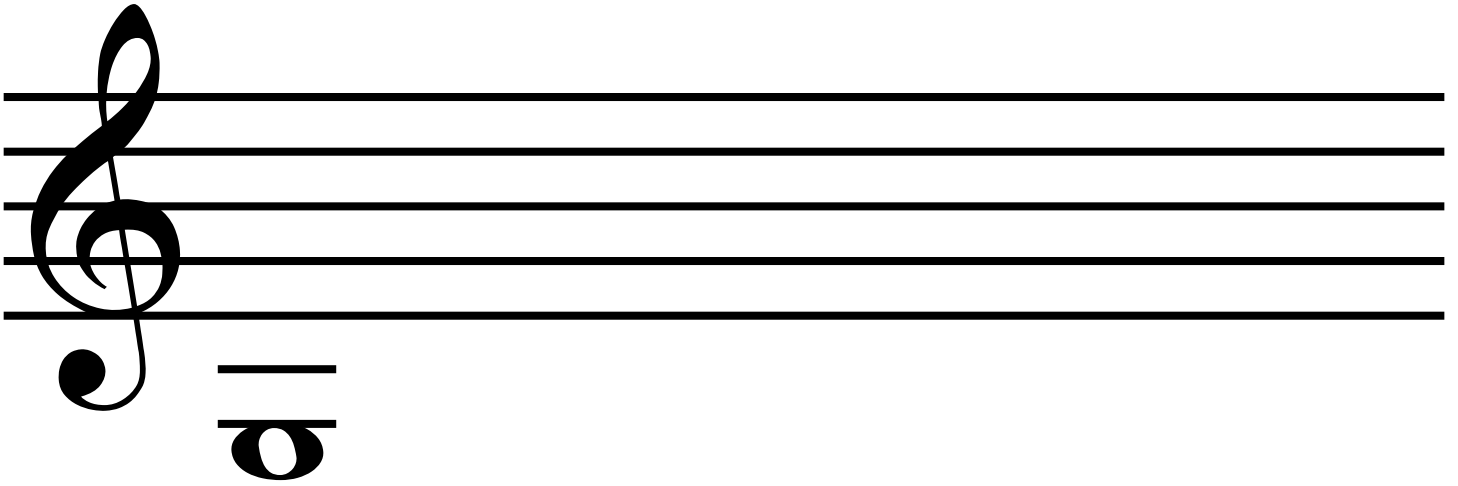
A musical staff with a treble clef. Below the staff, there is a whole note chord consisting of three notes: G4, A4, and B4. The notes are represented by a solid black circle for the stemhead, followed by a vertical line for the stem, and a horizontal bar for the notehead.

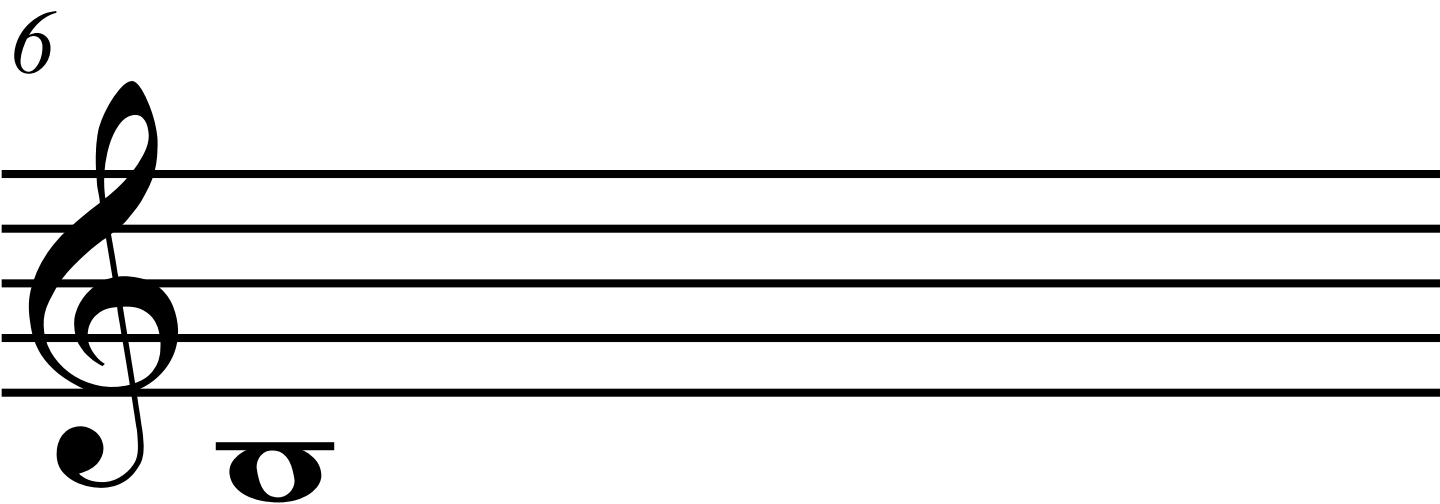
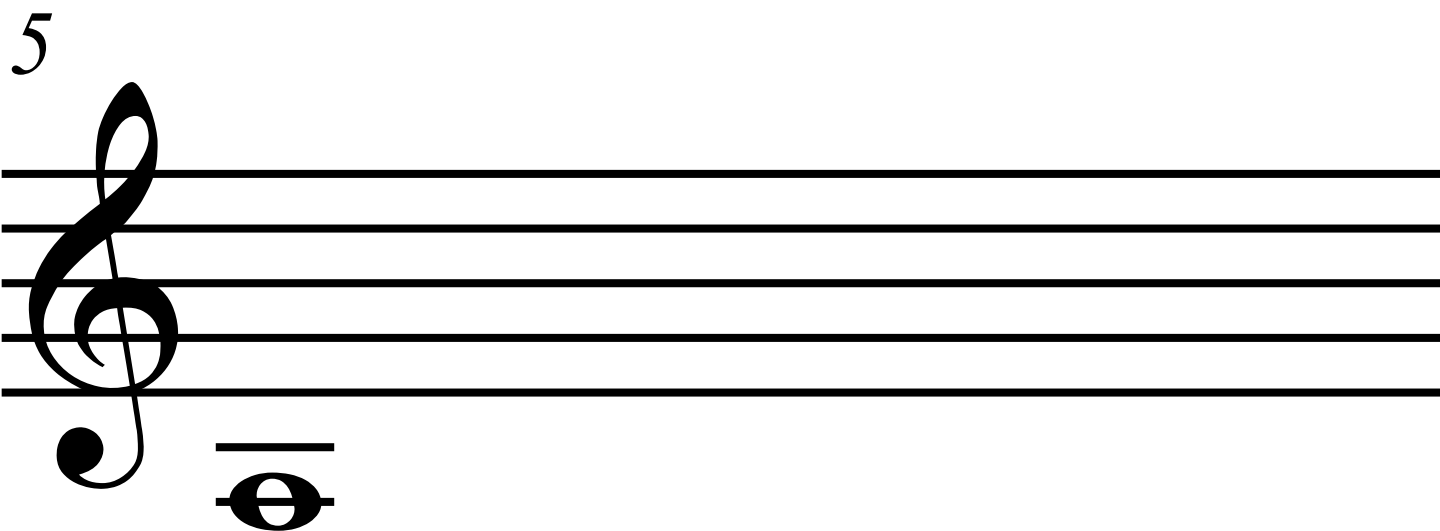
2

3



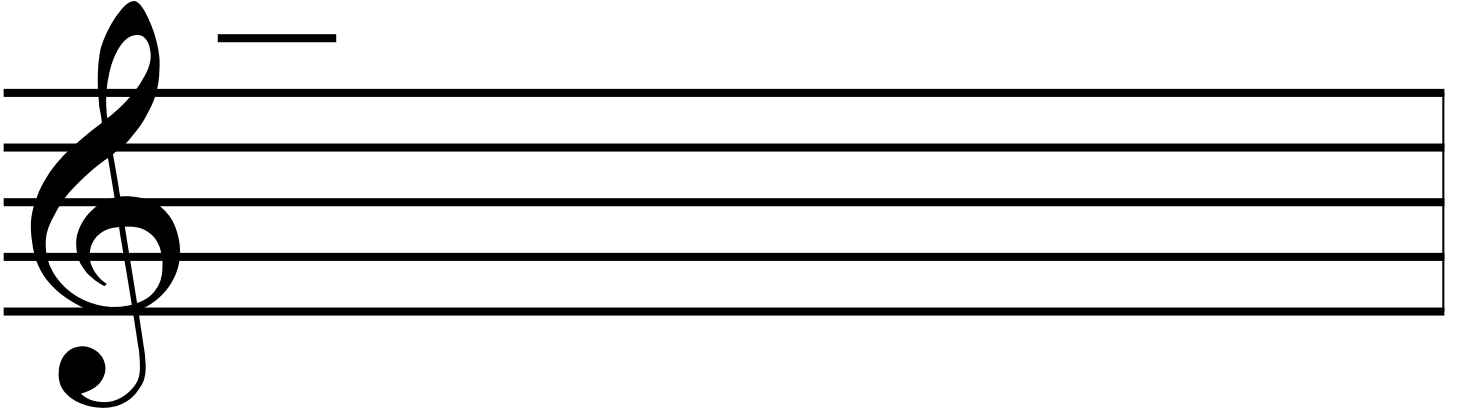
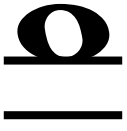
4





4

7



8

