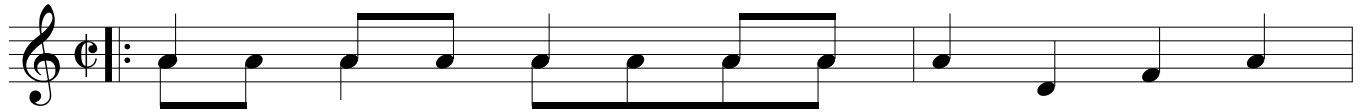


A Drunken Sailor

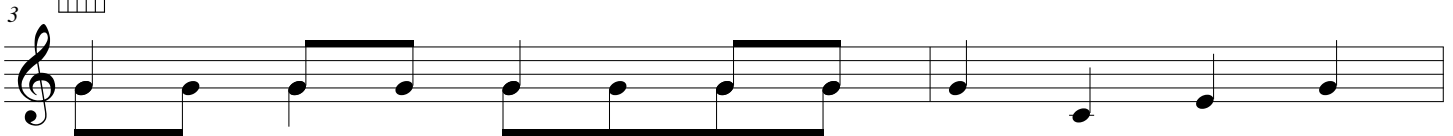
English Sea Shanty

Dm



1. what shall we do with a drunk - en sail - or,
2. Shave__ his bell - y with a rust - y raz - or,
3. Put him in a long boat__ till his sob - er,

C



what shall we do with a drunk - en sail - or,
Shave__ his bell - y with a rust - y raz - or,
Put him in a long boat__ till his sob - er,

Dm



what shall we do with a drunk - en sail - or, Ear - ly in the morn - ing!
Shave__ his bell - y with a rust - y raz - or, Ear - ly in the morn - ing.
Put him in a long boat__ till his sob - er, Ear - ly in the morn - ing!

C



Am7



Dm



Dm



Way hay and up she ris - es, Way hay and up she ris - es,

C



A Drunken Sailor

13

Dm C A7 Dm Dm

Way hay and up she ris - es, Ear - ly in the morn - ing! morn - ing!

4. Stick him in a barrel with a hosepipe on him,
 Stick him in a barrel with a hosepipe on him,
 Stick him in a barrel with a hosepipe on him,
 Ear-ly in the morning.

5. Put him in the bed with the captains daughter,
 Put him in the bed with the captains daughter,
 Put him in the bed with the captains daughter,
 Ear-ly in the morning!

Drunken Sailor

D^m

What shall we do with the drunken sailor?

C

What shall we do with the drunken sailor?

D^m

What we do with the drunken sailor

C A^{m7} D^m

Earl-eye in the morning?

Chorus

D^m

Way hay, when up she rises

C

Way hay, when up she rises

D^m

Way hay, when up she rises

C A⁷ D^m

Earl-eye in the morning

Shave his belly with a rusty razor

Shave his belly with a rusty razor

Shave his belly with a rusty razor

Earl-eye in the morning

Chorus

Put him in the back of paddy wagon

Put him in the back of paddy wagon

Put him in the back of paddy wagon

Earl-eye in the morning

Chorus

Put him in the bed with the captain's daughter

Put him in the bed with the captain's daughter

Put him in the bed with the captain's daughter

Earl-eye in the morning

Chorus

(Hey, hey, hey, hey, hey, hey, hey, heeeey.) twice

Put him in a longboat 'till he's sober
Put him in a longboat 'till he's sober
Put him in a longboat 'till he's sober
Earl-eye in the morning

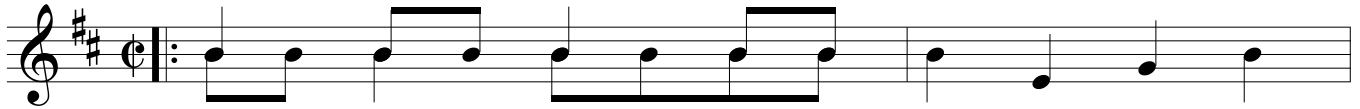
Chorus

That's what we do with the drunken sailor
What we do with the the drunken sailor
That's what we do with the drunken sailor
Earl-eye in the morning

A Drunken Sailor

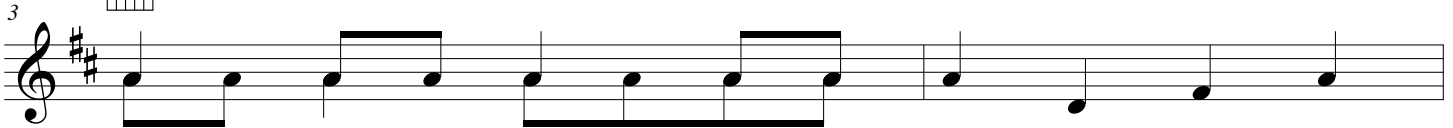
English Sea Shanty

Em



1. what shall we do with a drunk - en sail - or,
2. Shave__ his bell - y with a rust - y raz - or,
3. Put him in a long boat__ till his sob - er,

D



what shall we do with a drunk - en sail - or,
Shave____ his bell - y with a rust - y raz - or,
Put him in a long boat____ till his sob - er,

Em



D



Bm7



Em



what shall we do with a drunk - en sail - or, Ear - ly in the morn - ing!
Shave__ his bell - y with a rust - y raz - or, Ear - ly in the morn - ing.
Put him in a long boat__ till his sob - er, Ear - ly in the morn - ing!

Em



D



Way hay and up she ris - es, Way hay and up she ris - es,

A Drunken Sailor

13

Em D B7 Em Em

Way hay and up she ris - es, Ear - ly in the morn - ing! morn - ing!

4. Stick him in a barrel with a hosepipe on him,
 Stick him in a barrel with a hosepipe on him,
 Stick him in a barrel with a hosepipe on him,
 Ear-ly in the morning.

5. Put him in the bed with the captains daughter,
 Put him in the bed with the captains daughter,
 Put him in the bed with the captains daughter,
 Ear-ly in the morning!

A Drunken Sailor

English Sea Shanty

Dm

1. what shall we do with a drunk - en sail - or,
 2. Shave__ his bell - y with a rust - y raz - or,
 3. Put him in a long boat__ till his sob - er,

C

what shall we do with a drunk - en sail - or,
 Shave__ his bell - y with a rust - y raz - or,
 Put him in a long boat__ till his sob - er,

Dm C Am7 Dm

what shall we do with a drunk - en sail - or, Ear - ly in the morn - ing!
 Shave__ his bell - y with a rust - y raz - or, Ear - ly in the morn - ing.
 Put him in a long boat__ till his sob - er, Ear - ly in the morn - ing!

Dm C

Way hay and up she ris - es, Way hay and up she ris - es,

A Drunken Sailor

13

Way hay and up she ris - es, Ear - ly in the morn - ing! morn - ing!

4. Stick him in a barrel with a hosepipe on him,
 Stick him in a barrel with a hosepipe on him,
 Stick him in a barrel with a hosepipe on him,
 Ear-ly in the morning.

5. Put him in the bed with the captains daughter,
 Put him in the bed with the captains daughter,
 Put him in the bed with the captains daughter,
 Ear-ly in the morning!

A Drunken Sailor

English Sea Shanty

Em



1. what shall we do with a drunk - en sail - or,
 2. Shave his bell - y with a rust - y raz - or,
 3. Put him in a long boat ___ till his sob - er,

D



3



what shall we do with a drunk - en sail - or,
 Shave ___ his bell - y with a rust - y raz - or,
 Put him in a long boat ___ till his sob - er,

Em



D



Bm7



Em



5



what shall we do with a drunk - en sail - or, Ear - ly in the morn - ing!
 Shave ___ his bell - y with a rust - y raz - or, Ear - ly in the morn - ing.
 Put him in a long boat ___ till his sob - er, Ear - ly in the morn - ing!

Em



D



9



Way hay and up she ris - es, Way hay and up she ris - es,

13

Em D B7 Em Em

Way hay and up she ris - es, Ear - ly in the morn - ing! morn - ing!

4. Stick him in a barrel with a hosepipe on him,
 Stick him in a barrel with a hosepipe on him,
 Stick him in a barrel with a hosepipe on him,
 Ear-ly in the morning.

5. Put him in the bed with the captain's daughter,
 Put him in the bed with the captain's daughter,
 Put him in the bed with the captain's daughter,
 Ear-ly in the morning!

A Drunken Sailor

Ukulele

English Sea Shanty

Dm

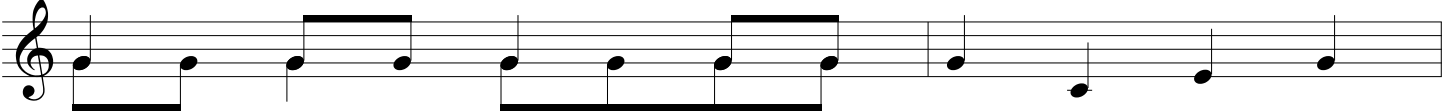


1. what shall we do with a drunk - en sail - or,
2. Shave__ his bell - y with a rust - y raz - or,
3. Put him in a long boat__ till his sob - er,

C



3



what shall we do with a drunk - en sail - or,
Shave__ his bell - y with a rust - y raz - or,
Put him in a long boat__ till his sob - er,

Dm



5



what shall we do with a drunk - en sail - or, Ear - ly in the morn - ing!
Shave__ his bell - y with a rust - y raz - or, Ear - ly in the morn - ing.
Put him in a long boat__ till his sob - er, Ear - ly in the morn - ing!

C



Am7



Dm



Dm



9



Way hay and up she ris - es, Way hay and up she ris - es,

C



A Drunken Sailor

13

Dm C A7 Dm Dm

Way hay and up she ris - es, Ear - ly in the morn - ing! morn - ing!

4. Stick him in a barrel with a hosepipe on him,
 Stick him in a barrel with a hosepipe on him,
 Stick him in a barrel with a hosepipe on him,
 Ear-ly in the morning.

5. Put him in the bed with the captains daughter,
 Put him in the bed with the captains daughter,
 Put him in the bed with the captains daughter,
 Ear-ly in the morning!