

Bill Bailey

Hughie Cannon

F



1

Won't you come home, Bill Bail - ey, — won't you come home?

C



5

I miss you all day long. —

C7



9

I'll do the cook - ing hon - ey, — I'll pay the rent.

F



13

I know I've done you wrong! —

17

Re - mem - ber the rain - y eve - ning I turned you out with -

21

F7 Bb

noth - ing but a fine tooth comb? _____ I know I'm to

26

G7/B F/C D7

blame, well ain't that a shame? _____ Bill

29

G C7 F C7 F

Bail - ey won't you please come home? home?

Bill Bailey

F

Won't You Come Home Bill Baily

F

Won't You Come Home

F

C

I miss you all day Long

C⁷

I'll Do The Cookin' Honey

C⁷

I'll Pay The Rent

F

I Know That I've Done You Wrong

F

Remember That Rainy Eve That I Drove You Out

F

F⁷

B^b

With Nothin' But A Fine Tooth Comb

G⁷/B

Yes I Know That I'm Too Blame

F/C

D⁷

Well ain't That A Shame

F

C⁷

F

Bill Baily Won't You Please Come Home

Bill Bailey

Hughie Cannon

E \flat



Won't you come home, Bill Bail - ey, — won't you come home?

B \flat



5 I miss you all day long.

B \flat 7



9 I'll do the cook - ing hon - ey, — I'll pay the rent.

E \flat



13 I know I've done you wrong!

17 Re - mem - ber the rain - y eve - ning I turned you out with-

Bill Bailey

21

E \flat 7 A \flat

noth - ing but a fine tooth comb? _____ I know I'm to

26

F 7/A E \flat /B \flat C7

blame, well ain't that a shame? _____ Bill

29

F B \flat 7 E \flat B \flat 7 E \flat

Bail - ey won't you please come home? home?

Bill Bailey

Hughie Cannon

E



Won't you come home, Bill Bail - ey, — won't you come home?

B



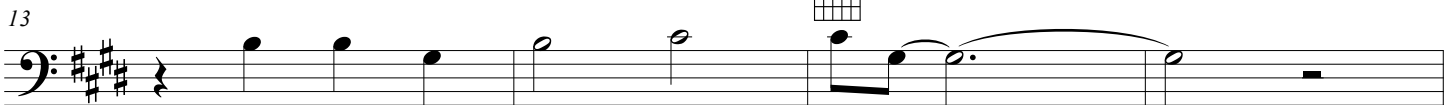
I miss you all day long. —————

B7



I'll do the cook - ing hon - ey, — I'll pay the rent.

E



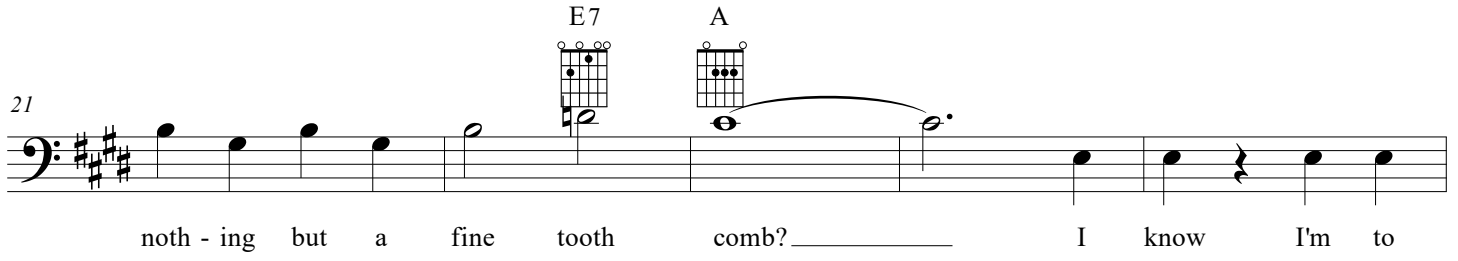
I know I've done you wrong! —————

17



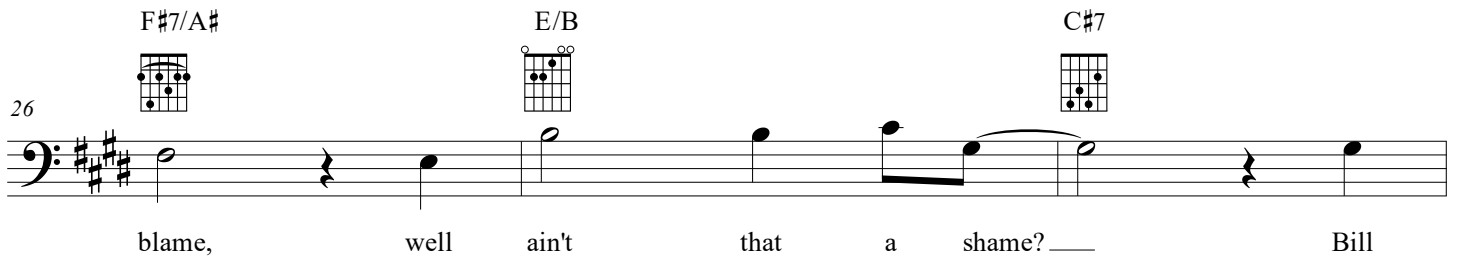
Re - mem - ber the rain - y eve - ning I turned you out with -

21



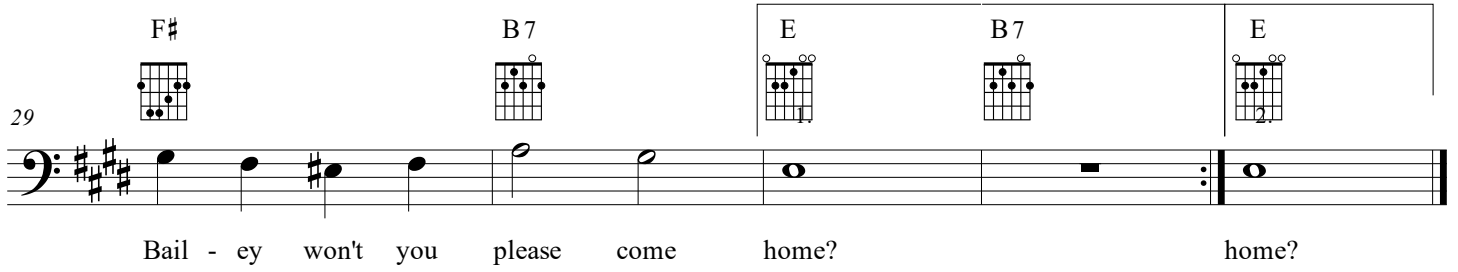
noth - ing but a fine tooth comb? I know I'm to

26



blame, well ain't that a shame? Bill

29



Bail - ey won't you please come home? home?

Bill Bailey

Hughie Cannon

C

C

C

6

G

G7

G7

12

G7

C

17

C

C

C

22

C7

F

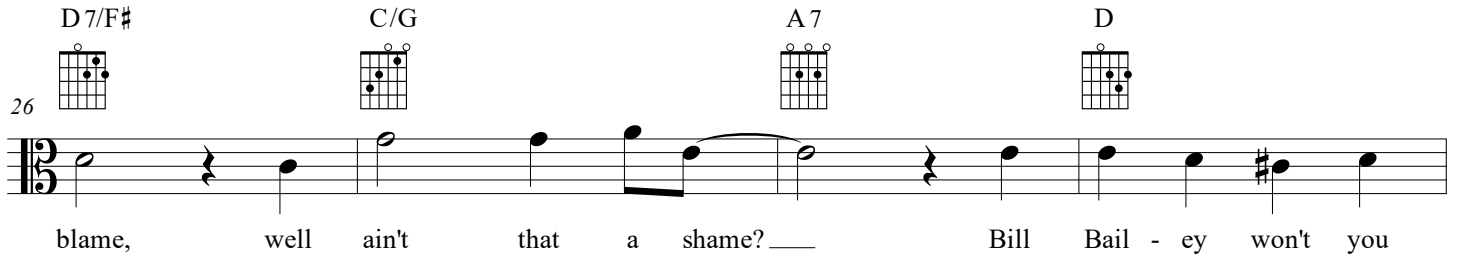
F

fine tooth comb? I know I'm to

Bill Bailey

26

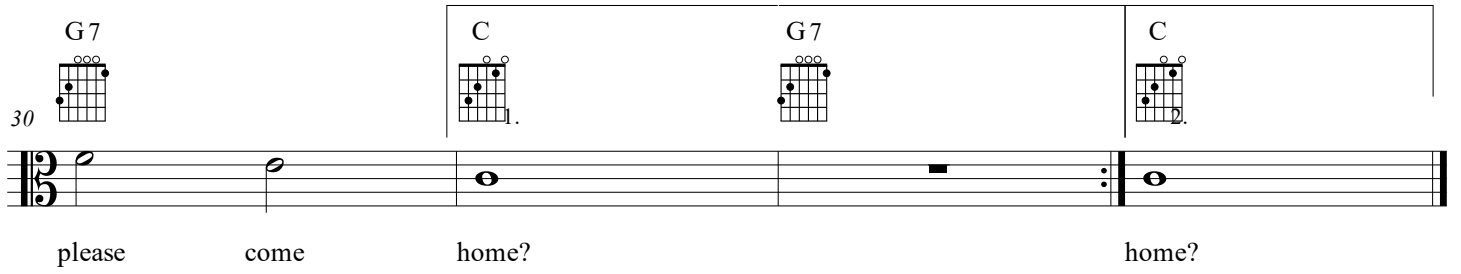
D7/F# C/G A7 D



blame, well ain't that a shame? ___ Bill Bail - ey won't you

30

G7 C G7 C



please come home? home?

Bill Bailey

Ukulele

Hughie Cannon

F



1
2
3
4
5
6
7
8
9

Won't you come home, Bill Bail - ey, — won't you come home?

C



C7



5
6
7
8
9
10
11
12
13
14

I miss you all day long. — I'll do the

10
11
12
13
14
15
16
17
18

cook - ing hon - ey, — I'll pay the rent. I know I've done you

F



15
16
17
18
19
20
21
22
23

wrong! — Re - mem - ber the rain - y eve - ning I turned you

F7



Bb



20
21
22
23
24
25
26
27
28

out with - noth - ing but a fine tooth comb? — I

Bill Bailey

25

G7/B F/C D7

know I'm to blame, well ain't that a shame? Bill

29

G C7 F C7 F

Bail - ey won't you please come home? home?