

# All the Pretty Little Ponies

Traditonal American

Dm



Gm



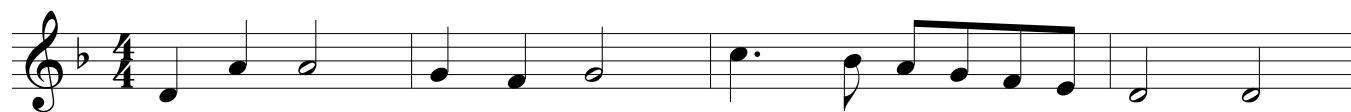
Dm7



A7



Dm



Hush - a - by, Don't you cry Go to sleep - y lit - tle ba - by

Gm



Dm7



A7



Dm



When you wake you shall have All the pret - ty lit - tle po - nies.

**Fine**

F



Dm



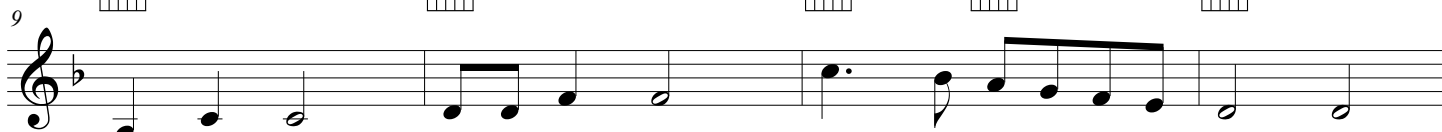
Dm7



A7



Dm



Blacks and bays, dap - ples and grays Coach and six a lit - tle po - nies

Gm



Dm7



A7



Dm



When you wake you shall have All the pret - ty lit - tle po - nies.

**D.C. al Fine**

## All the Pretty Little Ponies

**D<sup>m</sup>**                    **G<sup>m</sup>**  
Hush-a-bye, don't you cry,  
**D<sup>m</sup>**    **A<sup>7</sup>**                    **D<sup>m</sup>**  
Go to sleep my little baby.  
**D<sup>m</sup>**                    **G<sup>m</sup>**  
When you wake you shall have  
          **A<sup>7</sup>**                    **D<sup>m</sup>**  
All the pretty little ponies.  
**F**                    **D<sup>m</sup>**  
Black and bays, dapples, grays,  
          **A<sup>7</sup>**                    **D<sup>m</sup>**  
Coach and six a little ponies.  
**D<sup>m</sup>**                    **G<sup>m</sup>**  
When you wake you shall have  
**D<sup>m</sup>**    **A<sup>7</sup>**                    **D<sup>m</sup>**  
All the pretty little ponies.

Hush-a-bye, don't you cry,  
Go to sleep my little baby.  
When you wake you shall have  
All the pretty little ponies.

# All the Pretty Little Ponies

Traditonal American

Em



Am



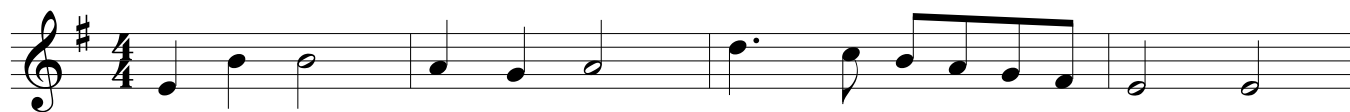
Em7



B7



Em



Hush - a - by, Don't you cry Go to sleep - y lit - tle ba - by

Am



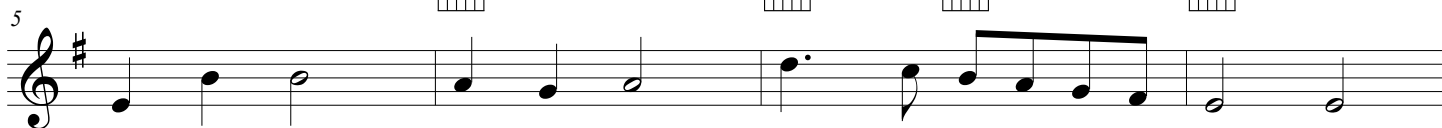
Em7



B7



Em



When you wake you shall have All the pret - ty lit - tle po - nies.

**Fine**

G



Em



Em7



B7



Em



Blacks and bays, dap - ples and grays Coach and six a lit - tle po - nies

Am



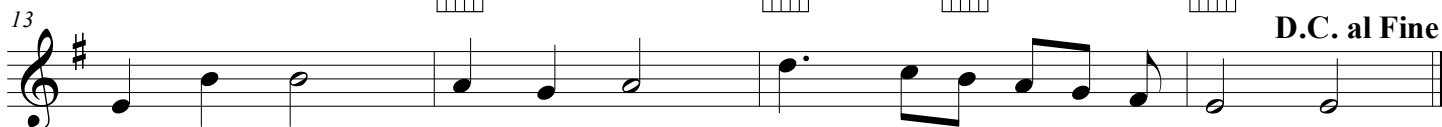
Em7



B7



Em



When you wake you shall have All the pret - ty lit - tle po - nies.

**D.C. al Fine**

# All the Pretty Little Ponies

Traditonal American

Dm



Gm



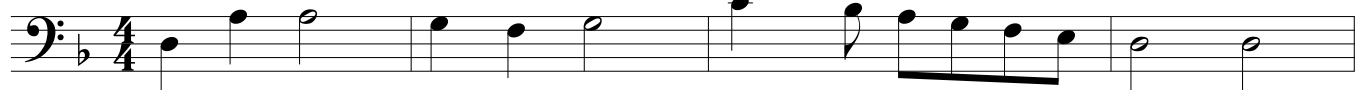
Dm7



A7



Dm



Hush - a - by, Don't you cry Go to sleep - y lit - tle ba - by

Gm



Dm7



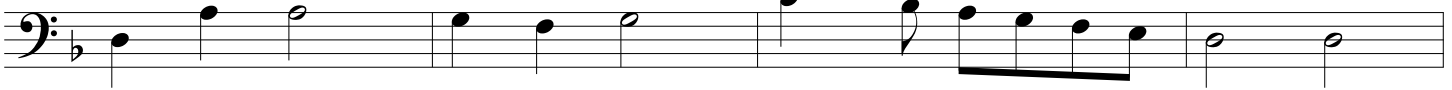
A7



Dm



5



When you wake you shall have All the pret - ty lit - tle po - nies. **Fine**

F



Dm



Dm7



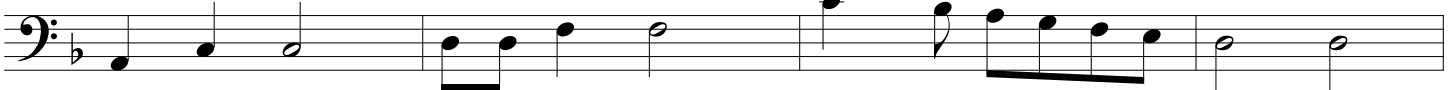
A7



Dm



9



Blacks and bays, dap - ples and grays Coach and six a lit - tle po - nies

Gm



Dm7



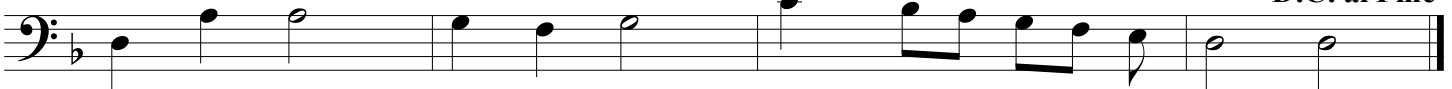
A7



Dm



13



When you wake you shall have All the pret - ty lit - tle po - nies. **D.C. al Fine**

# All the Pretty Little Ponies

Traditonal American

F m      B♭m      F m7      C7      F m



5



Hush - a - by,      Don't you cry      Go      to sleep - y lit - tle      ba - by

B♭m      F m7      C7      F m



9



When you wake      you shall have      All      the pret - ty lit - tle      po - nies. **Fine**

A♭      F m      F m7      C7      F m



13



Blacks and bays,      dap-ples and grays      Coach      and six a lit - tle      po - nies

B♭m      F m7      C7      F m



13



When you wake      you shall have      All      the pret - ty lit - tle      po - nies. **D.C. al Fine**

# All the Pretty Little Ponies

Ukulele

Traditonal American

Dm Gm Dm7 A7 Dm



Hush - a - by, Don't you cry Go to sleep - y lit - tle ba - by

5 Gm Dm7 A7 Dm



When you wake you shall have All the pret - ty lit - tle po - nies. **Fine**

9 F Dm Dm7 A7 Dm



Blacks and bays, dap-ples and grays Coach and six a lit - tle po - nies

13 Gm Dm7 A7 Dm



When you wake you shall have All the pret - ty lit - tle po - nies. **D.C. al Fine**