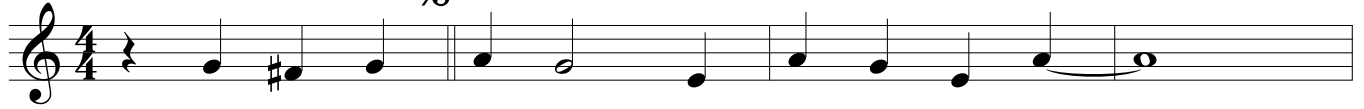
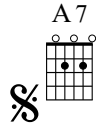


Alabama Jubilee

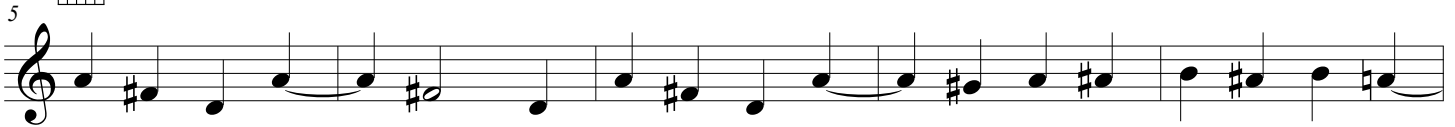
Traditional American



D7



G7



Alabama Jubilee

Traditional American

5

10

15

21

27

E7

A7

D7

G

E7

Am

D7

G

B7

Em

D9 4ft.

G

A7

D7

G

D.S. al Fine

Fine

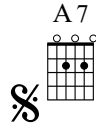
Alabama Jubilee

Traditional American

The musical score for "Alabama Jubilee" is written in G major (one sharp) and 4/4 time. It consists of five staves of music. The first staff begins with a treble clef, a key signature of one sharp (F#), and a 4/4 time signature. The melody starts with a quarter rest, followed by quarter notes G4, A4, B4, and C5. A guitar chord diagram for G7 is shown above the staff. The second staff starts at measure 5 and continues the melody with quarter notes D5, E5, F#5, and G5, followed by quarter notes G4, A4, B4, and C5. A guitar chord diagram for C7 is shown above the staff. The third staff starts at measure 10 and continues with quarter notes D5, E5, F#5, and G5, followed by quarter notes G4, A4, B4, and C5. A guitar chord diagram for F7 is shown above the staff. The fourth staff starts at measure 15 and continues with quarter notes D5, E5, F#5, and G5, followed by quarter notes G4, A4, B4, and C5. A guitar chord diagram for Bb is shown above the staff. The fifth staff starts at measure 21 and continues with quarter notes D5, E5, F#5, and G5, followed by quarter notes G4, A4, B4, and C5. A guitar chord diagram for G7 is shown above the staff. The sixth staff starts at measure 27 and continues with quarter notes D5, E5, F#5, and G5, followed by quarter notes G4, A4, B4, and C5. A guitar chord diagram for Cm is shown above the staff. The seventh staff starts at measure 33 and continues with quarter notes D5, E5, F#5, and G5, followed by quarter notes G4, A4, B4, and C5. A guitar chord diagram for F7 is shown above the staff. The eighth staff starts at measure 39 and continues with quarter notes D5, E5, F#5, and G5, followed by quarter notes G4, A4, B4, and C5. A guitar chord diagram for Bb is shown above the staff. The ninth staff starts at measure 45 and continues with quarter notes D5, E5, F#5, and G5, followed by quarter notes G4, A4, B4, and C5. A guitar chord diagram for D7 is shown above the staff. The tenth staff starts at measure 51 and continues with quarter notes D5, E5, F#5, and G5, followed by quarter notes G4, A4, B4, and C5. A guitar chord diagram for Gm is shown above the staff. The eleventh staff starts at measure 57 and continues with quarter notes D5, E5, F#5, and G5, followed by quarter notes G4, A4, B4, and C5. A guitar chord diagram for F9 is shown above the staff. The twelfth staff starts at measure 63 and continues with quarter notes D5, E5, F#5, and G5, followed by quarter notes G4, A4, B4, and C5. A guitar chord diagram for Bb is shown above the staff. The thirteenth staff starts at measure 69 and continues with quarter notes D5, E5, F#5, and G5, followed by quarter notes G4, A4, B4, and C5. A guitar chord diagram for C7 is shown above the staff. The fourteenth staff starts at measure 75 and continues with quarter notes D5, E5, F#5, and G5, followed by quarter notes G4, A4, B4, and C5. A guitar chord diagram for F7 is shown above the staff. The fifteenth staff starts at measure 81 and continues with quarter notes D5, E5, F#5, and G5, followed by quarter notes G4, A4, B4, and C5. A guitar chord diagram for Bb is shown above the staff. The sixteenth staff starts at measure 87 and continues with quarter notes D5, E5, F#5, and G5, followed by quarter notes G4, A4, B4, and C5. A guitar chord diagram for Bb is shown above the staff. The score ends with the instruction "D.S. al Fine" and "Fine".

Alabama Jubilee

Traditional American



D7



5



G7



10



C



15



A7



Dm



21



G7



C



E7



Am



G9



C



D7



G7



C



27



D.S. al Fine

Fine

Ukulele

Alabama Jubilee

Traditional American

A7

D7

G7

5

C

10

A7

15

Dm

G7

C

E7

21

Am

G9

C

D7

G7

C

D.S. al Fine

27

Fine